

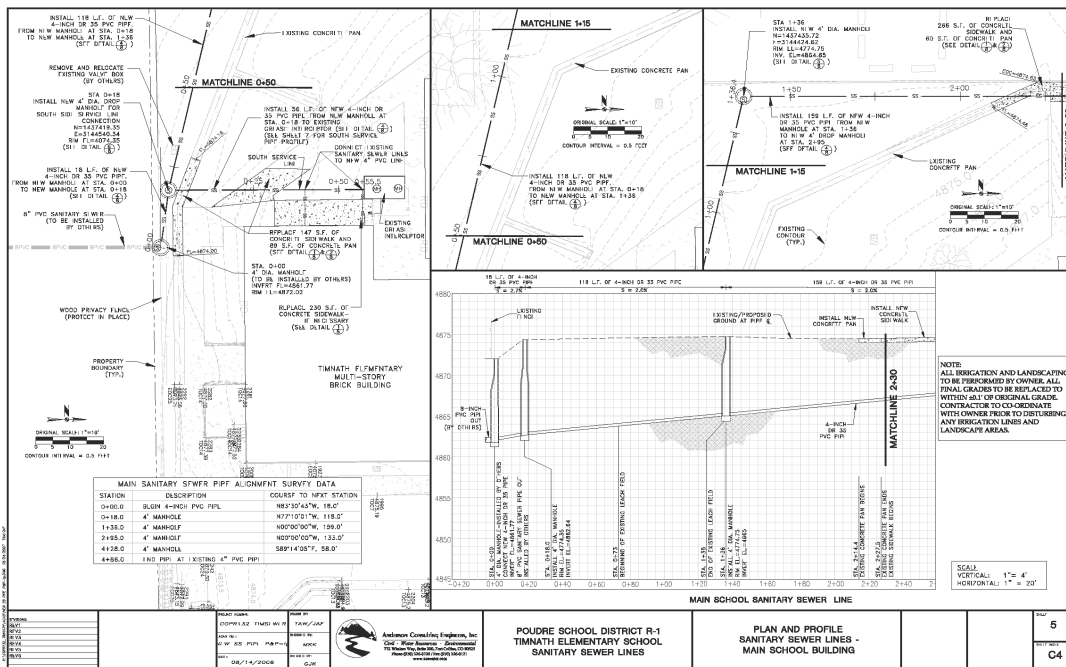
Final Design of the Sanitary Sewer Improvements at Timnath Elementary School, Timnath, CO

Client: Jerry Garretson
 Poudre School District
 2407 LaPorte Avenue
 Fort Collins, Colorado 80521
 (970) 490-3589



Anderson Consulting Engineers, Inc. (ACE) was contracted by the Poudre School District to design, develop, and provide final construction drawings for the Sanitary Sewer Improvements at **Timnath Elementary School**. As part of the Town of Timnath's efforts to convert the town's sewer system from septic tanks to a treatment system, the Town installed a sanitary sewer system that connects to the wastewater treatment plant operated by the Fort Collins/Loveland Sanitary Sewer District. In order to avail of this new sanitary sewer service, the Poudre School District tasked ACE with the design of four new sanitary sewers serving the school, and connecting these sewers to the Town's sewer main in Larimer County Road 5. The staff of Anderson Consulting Engineers completed the following tasks for this project:

- collection of existing site data and coordination of the surveying efforts necessary to develop existing topography;
- potholing services to locate and verify the size and condition of the existing sanitary sewer pipes servicing the school buildings;
- coordination with the Town of Timnath regarding the incorporation of the sanitary sewer design into the design of the new sanitary sewer main under Larimer County Road 5;
- abandonment of the existing septic tanks and leach fields;
- hydraulic analysis of the new sanitary sewer service lines including an evaluation of the future capacity of the school, which is expected to be up to 600 students;
- final design and development of a set of construction drawings and specifications, including plans and profiles of each sewer lines, new manholes and cleanouts, and the connection to the new sanitary sewer main; and
- construction consultation services during the bidding and construction phases of the project.



Timnath Elementary School Sanitary Sewer Plan and Profile